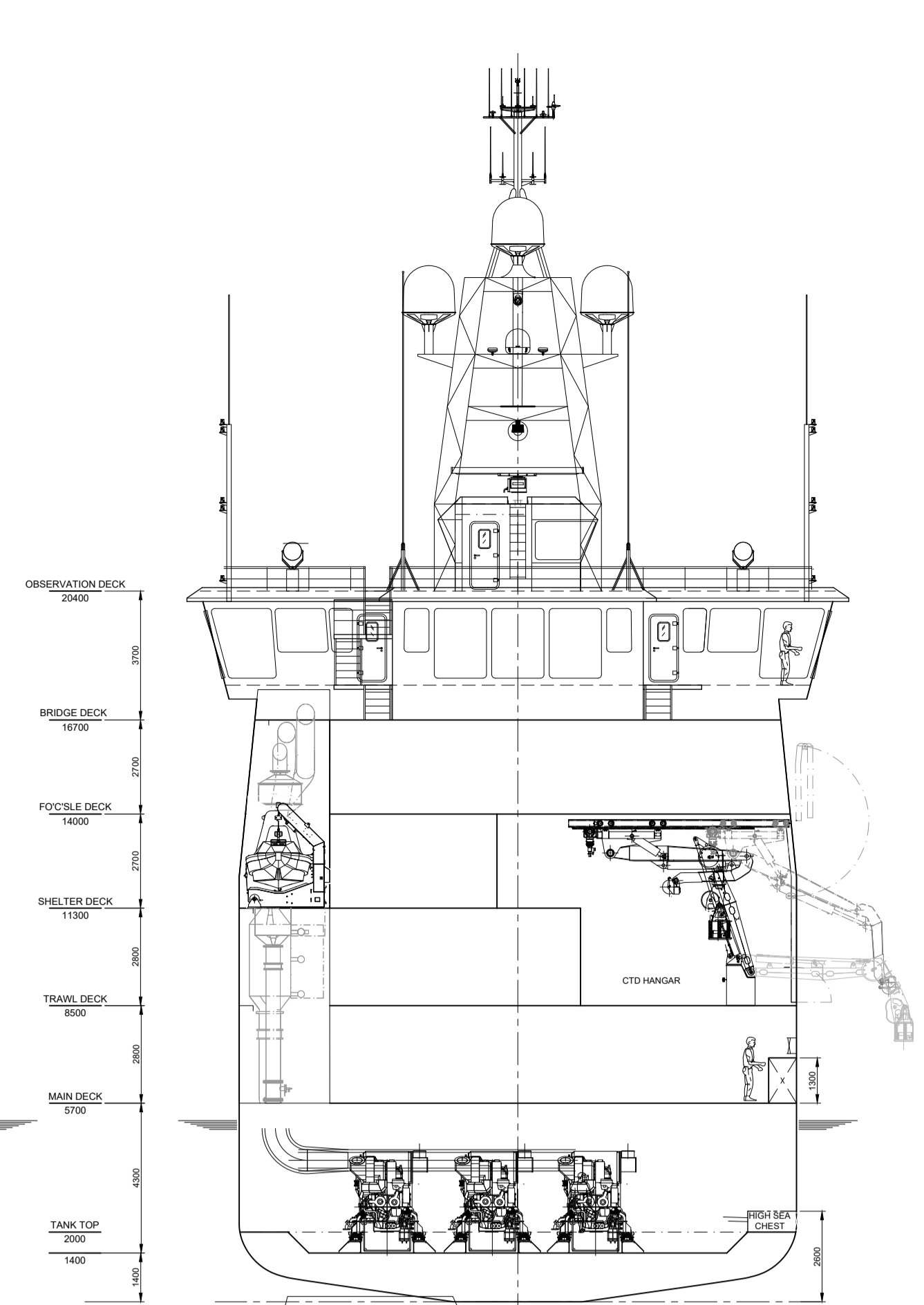


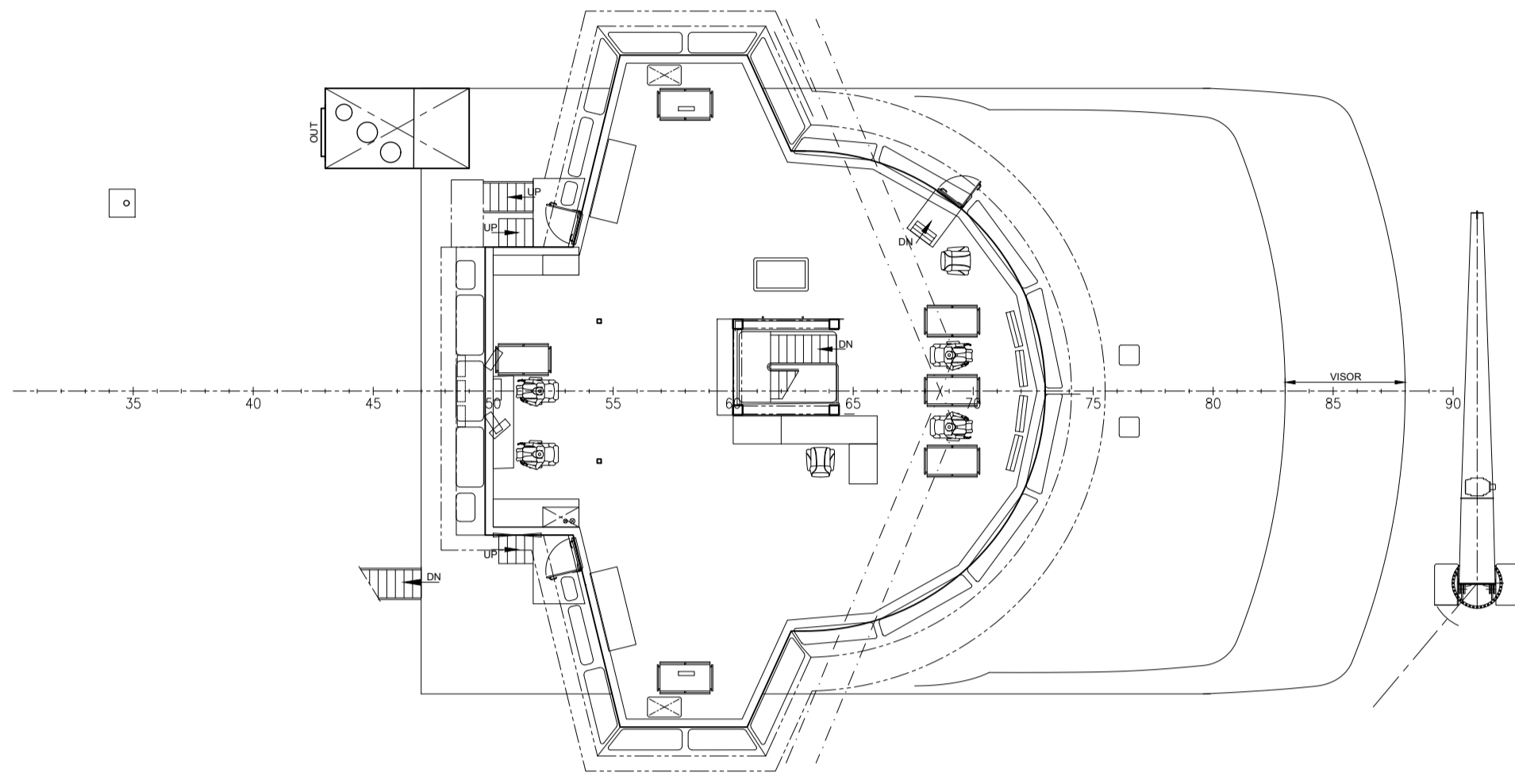
TRANSOM

PROFILE

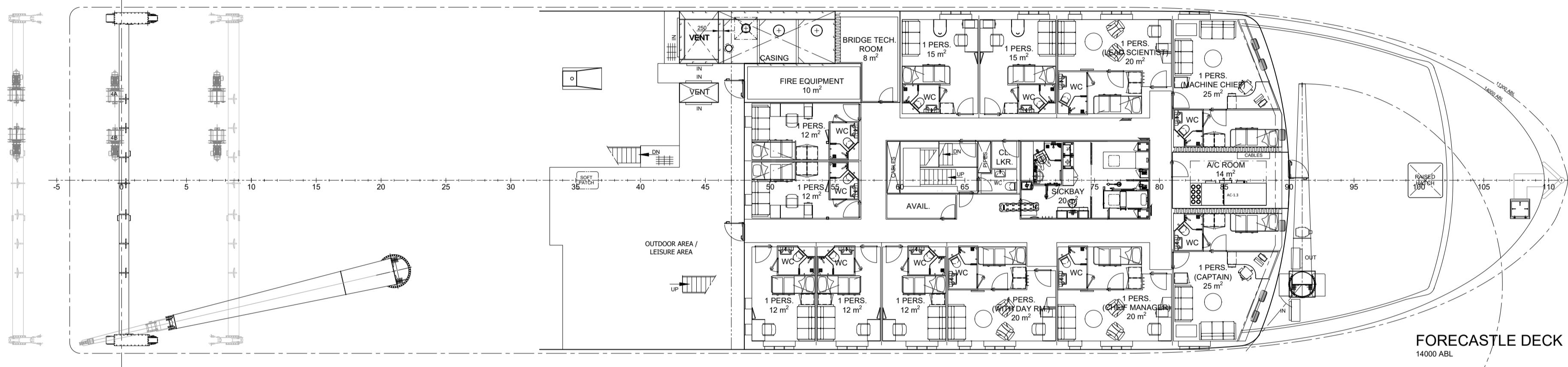


TRANSVERSE SECTION

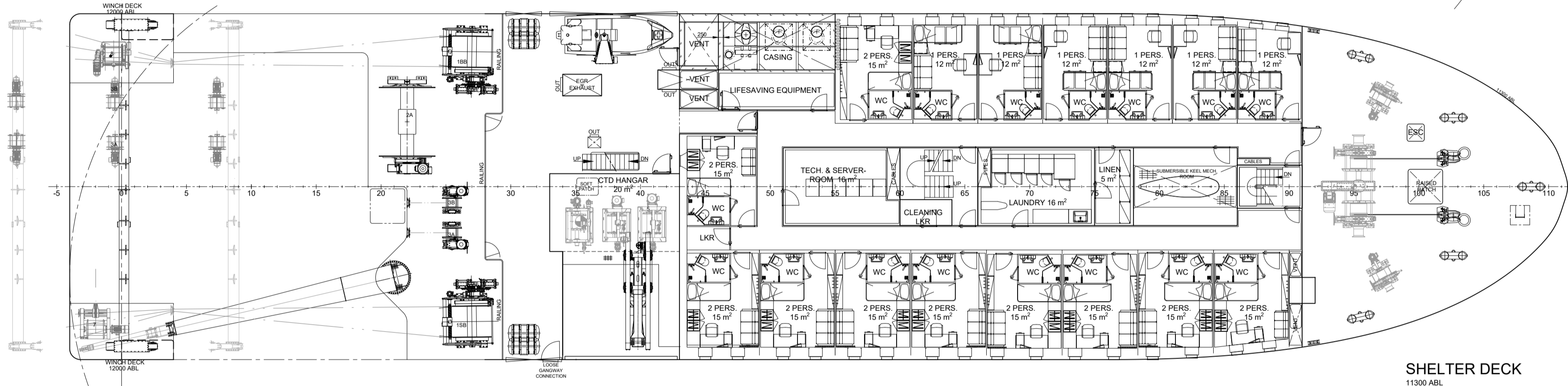
OBSERVATION DEC
3400 081



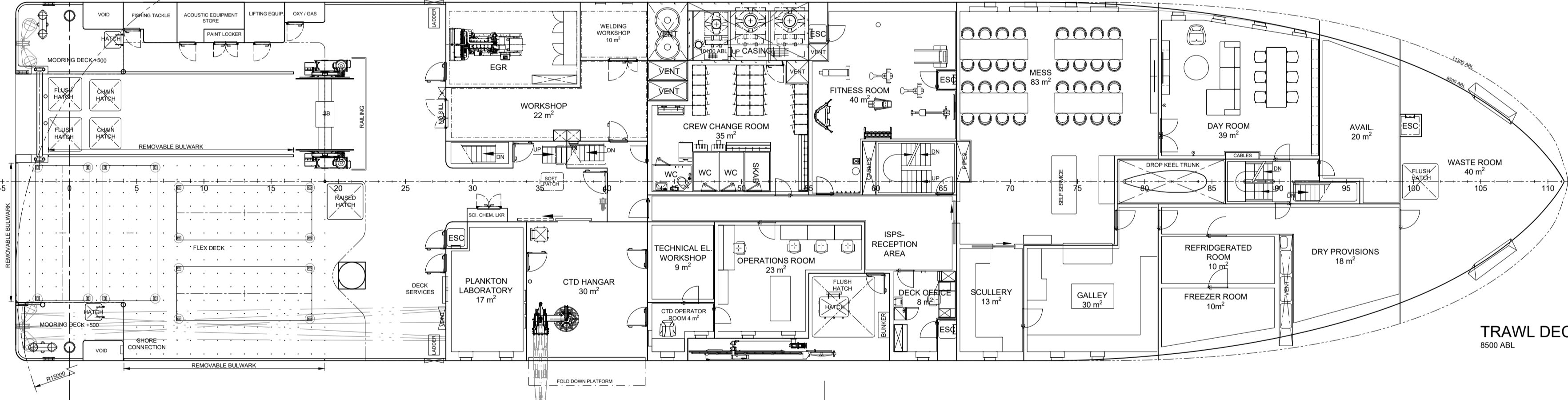
BRIDGE DECK
1670 / 1770 ABL



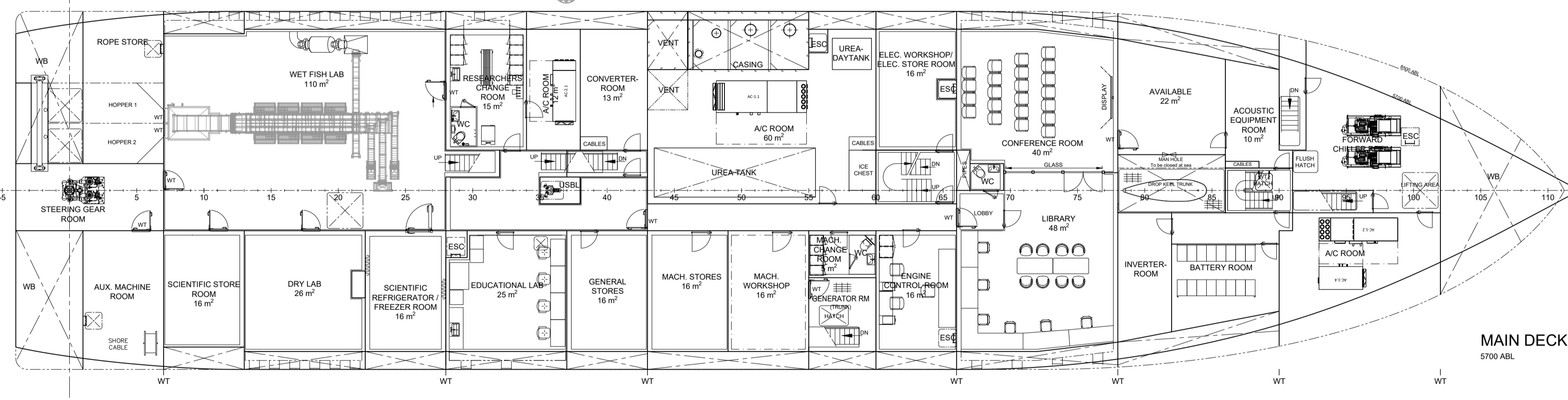
FORECASTLE DECK
1400 ABL



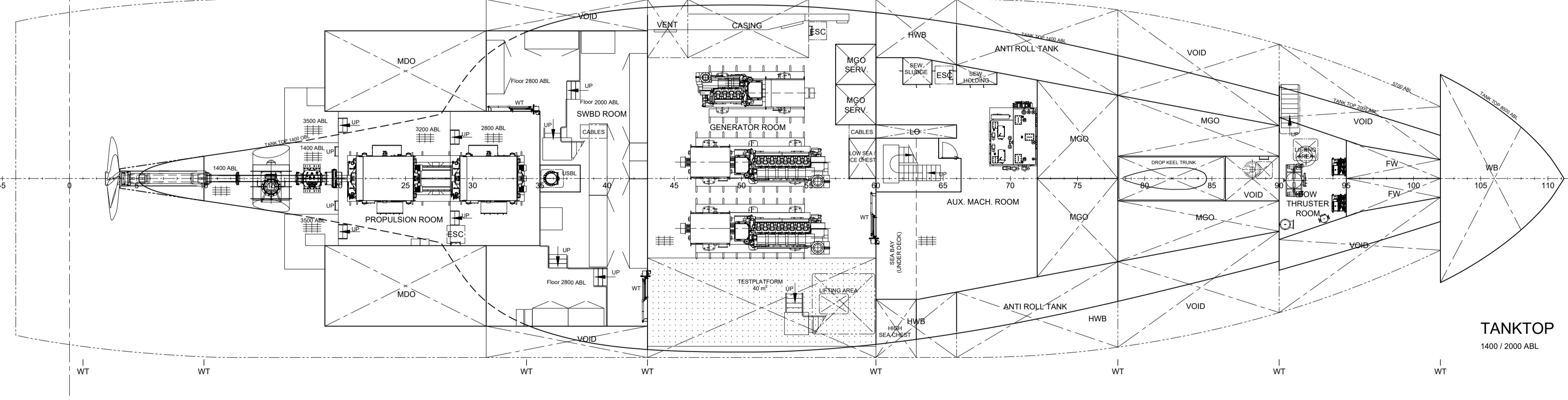
SHELTER DECK
1130 ABL



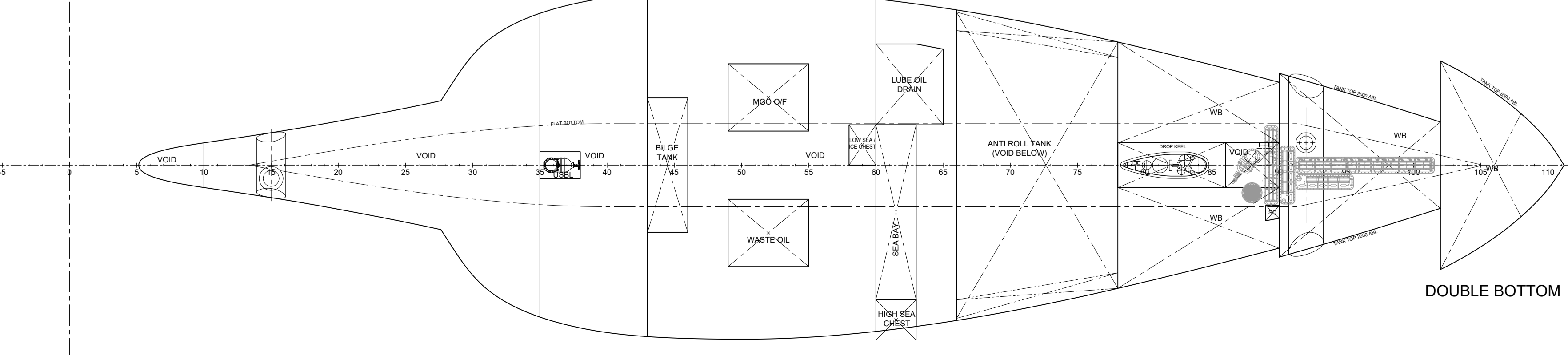
TRAWL DECK
800 ABL



MAIN DECK
570 ABL



TANKTOP
140 / 200 ABL



DOUBLE BOTTOM

PRINCIPAL PARTICULARS

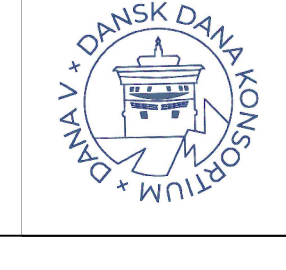
LENGTH OVER ALL :	69,80 m
LENGTH BETWEEN P.P. :	67,40 m
BREADTH MLD :	16,00 m
DEPTH TO MAIN DECK :	5,70 m
SCANTLING DRAFT :	5,40 m
DESIGN DRAFT :	5,20 m
FRAME SPACING :	0,60 m
BY CLASS :	1 # HULL # MACH, Special Service/Research Vessel SP38, Unrestricted navigation, # AUT-UMS, MONSHAFT, COMF NOISE 2, COMF VIB 2, URN SPECIFIED VESSEL, ICE CLASS IA, # DYNAPOS AMAT, POLAR CLASS 6, POLAR CAT-B

ACCOMMODATION FOR 39 PERSONS
SHELTER DECK: 6 SINGLE AND 10 DOUBLE CABINS
FO'CSLE DECK: 12 SINGLE CABINS, HOSPITAL

2.14	2023.11.23	MPS	Updated according to design development	HDP	2023.11.23
1.17	2023.09.22	MPS	Updated according to design development	HDP	2023.09.22
Rev:	17070101.01	int	Baseline	QC	17070101.02



OMT
Ole Martin Møller
Technology AS



DTU AQUA
DANA V UDBUDSDSIGN
General arrangement

Drawing number:	23007.01.101.0110.01	Date:	2023.06.02	Revision:	2.14
Drawn by:	MPS	Checked by:	TRA	Scale (1:N.O.):	1:150
		Rev:	AG	Sheet:	1/1